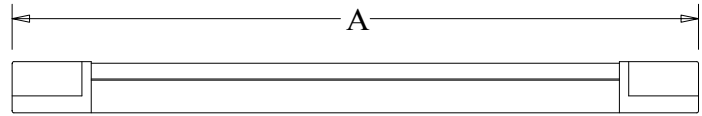
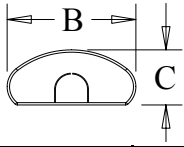


integral LED

INSTALLATION INSTRUCTION for Intergral LIGHTSPAN SLIM II IP40 LED Battens 3 Years Warranty



LED Batten Model	Function	Product Dimensions(mm) (AxBxC)	Net Weight (Kg)
ILBTF101	2FT 10W/15W/20W 3000K4000K/6000K Standard	590x80x36	0.48
ILBTF102	4FT 20W/30W/40W 3000K4000K/6000K Standard	1190x80x36	0.88
ILBTF103	5FT 30W/45W/60W 3000K4000K/6000K Standard	1490x80x36	1.6
ILBTF104	6FT 36W/54W/72W 3000K4000K/6000K Standard	1790x80x36	1.35
ILBTF105	2FT 10W/15W/20W 3000K4000K/6000K SENSOR	590x80x36	0.48
ILBTF106	4FT 20W/30W/40W 3000K4000K/6000K SENSOR	1190x80x36	0.88
ILBTF107	5FT 30W/45W/60W 3000K4000K/6000K SENSOR	1490x80x36	1.6
ILBTF108	6FT 36W/54W/72W 3000K4000K/6000K SENSOR	1790x80x36	1.35
ILBTF109	2FT 20W 3000K4000K/6000K EMERGENCY	590x80x36	0.58
ILBTF110	4FT 40W 3000K4000K/6000K EMERGENCY	1190x80x36	0.99
ILBTF111	5FT 60W 3000K4000K/6000K EMERGENCY	1490x80x36	1.7
ILBTF112	4FT 40W 3000K4000K/6000K EMERGENCY / SENSOR	1190x80x36	0.99
ILBTF113	5FT 60W 3000K4000K/6000K EMERGENCY / SENSOR	1490x80x36	1.7

*Output level under emergency conditions

Thank you for purchasing an INTERGRAL LED product. When installed correctly this unit will provide years of service with no lamp changes required. For support or warranty information please see integral-led.com. Always turn off circuit power at the distribution unit before installation and maintenance. Please ensure that the power cannot be connected inadvertently.

Important Details - Please read prior to installation

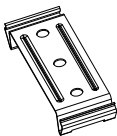
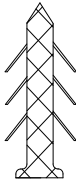
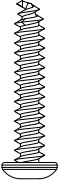
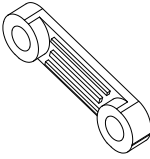
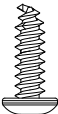
Ensure the AC/Mains power is NOT connected and cannot be unexpectedly during installation.

General guidelines for installation:

1. This product must be installed by a competent electrician in accordance with the instructions provided and in compliance with recognised electrical and safety regulations relevant to the country it is being installed.
2. This product is suitable for installation on surfaces with normal flammability e.g. wood, masonry. Before making the fixing hole(s), check that there are no obstructions hidden beneath the mounting surface, such as pipes or cables. It is not suitable for use on highly flammable surfaces or in flammable atmosphere.
3. For ceiling, wall mounted or suspended installations please follow "Installation instructions" below. For surface mounting this product must be securely fixed to the mounting surface using the brackets, screws and wall plugs supplied (Fig. 1). The screws and wall plugs are suitable for "masonry" only.
4. For the correct polarity please see "Wiring Connection".
5. This product is not suitable for dimming.

Fixing Kit

(Fig. 1)

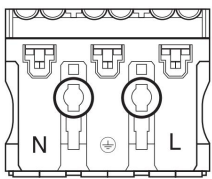
				
Clip 2pcs	Expansion bolts 4pcs	Screw 4pcs	wire clips 1pcs	Screw 2pcs

IMPORTANT! This product is a class I device and must be connected to an earth termination.

Installation Instructions

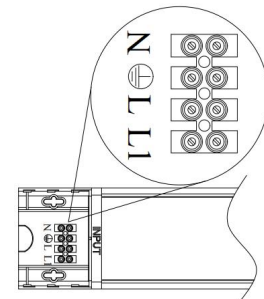
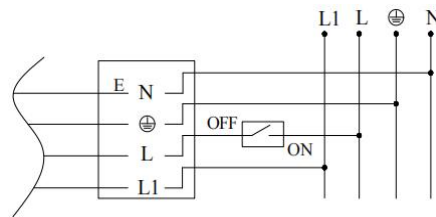
1. Open the batten diffuser cover retaining clips. Note that there are two clips that remain attached to the housing so that the diffuser cover doesn't fall away during installation. If the clips have been secured with security bolts you will need suitable hex key to unscrew and remove them before you can unclip the diffuser cover.
2. Release the LED and gear tray by turning the two plastic locking caps by hand to the release position. The tray may then be lifted. The connection for the mains is on the underside of the tray. Note that there are two nylon retaining straps with clips to secure the tray to the base housing. These will need to be attached for secure installation.
3. Secure the base unit to the mounting surface using the supplied fixing kit or using suspension wires which are supplied separately. Ceiling mounting height is from 3 to 6 metres for sensor version.
5. Connect the mains supply cable to the push type terminal blocks as indicated in the "Wiring Connection" below.
6. **IMPORTANT FOR SAFETY** when reassembling the base and diffuser units.
 - a. Ensure the nylon straps are clipped to the tray.
 - b. Ensure the tray is then secured to the base by turning the retaining caps with no trapped wires.
 - c. Ensure the diffuser is properly seated on the base and close the metallic retaining clips. Secure these clips with the security screws if required.

Wiring Connection



Wiring connection for all Non-Emergency units & ILBTF109
 LIVE - (Brown) to Terminal L
 NEUTRAL - (Blue) to Terminal marked N
 EARTH - (Green/Yellow) for Class 1 fittings to Terminal marked \oplus

- * Connect the incoming earth cable to the earth terminal on connector block
- * Connect the incoming neutral cable to the neutral terminal marked N on the connector block.
- * Connect the incoming live cable to terminal marked L on the connector block.



Wiring connection for emergency units

Connect the incoming earth cable to the earth terminal on the connector block

- * Connect the incoming neutral cable to the neutral terminal marked N on the connector block
- * PERMANENT LIVE - Black to Terminal Marked L1. This will ensure that the battery charges.

Note: Any continued switching of the permanent live will reduce the battery's considerably

* SWITCH LIVE - Brown to Terminal Marked L1

* There should be a loose flying lead connected to the battery.

* This needs to be attached to the empty socket found on the emergency control unit

Following power up on an emergency equipped unit, the green LED indicator should illuminate to indicate proper battery charging. If power to an emergency equipped unit is disrupted or isolated, the indicating green LED will switch off, triggering the emergency LED's to illuminate for a minimum of 3 hours. Please Allow 24 hours charge for optimum duration.

Motion Sensor operation for motion sensing units



1. With sufficient ambient light, the light will not be switched on.



2. With insufficient ambient light, the sensor switches on the light when motion is detected.



3. After elapse of hold time, the Sensor switches off the light When no motion is detected.

The microwave sensor version provides an ON/OFF function. It has maximum installed height of 3metres and maximum detection area radius of 3metres. It is set up manually using the 8 configuration switches that are sited on the top of the LED and gear tray. Detection area, hold time, Daylight Sensor and Operating Mode can be precisely set as follows: (Default setting: 100%, 5s, +∞, 0s)

Detection Area				Hold Time				Daylight Sensor				Operating Mode			
	1	2		3	4			5	6			7	8		
I	ON	ON	100%	I	ON	ON	5S	I	ON	ON	+∞	I	ON	ON	0S
II	-	ON	75%	II	-	ON	90S	II	-	ON	50lux	II	-	ON	30S
III	ON	-	50%	III	ON	-	3min	III	ON	-	15lux	III	ON	-	10min
IV	-	-	25%	IV	-	-	10min	IV	-	-	5lux	IV	-	-	+∞

Detection area

In this area, movement will be detected and able to trigger the sensor. 100% detection area is also known as the strong sensitivity.

Hold-time

The period of light keeping 100% brightness after moving objects leave the detection area

Daylight Sensor

Definition of the ambient brightness; only when the ambient brightness is lower than the preset specific lux amount, the sensor will work; when it's preset as '+∞', the sensor works everything it detects motion regardless the ambient brightness.

Operating Mode

If the sensor does not detect any movement, the light will remain at 10% brightness until the selected time expires, however if any movement is detected during this period, the light will return to 100% brightness again and restart the timer.

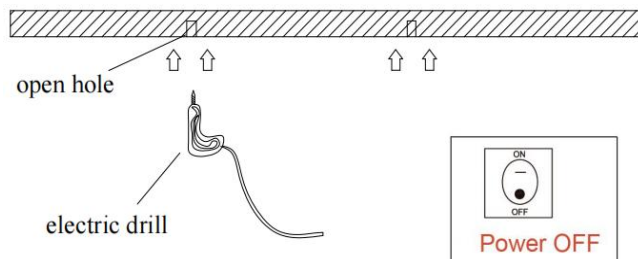
Warranty

This unit carries 3 years warranty from the date of purchase, providing that it has been installed correctly and not modified in anyway. Should a fault occur please contact the original place of purchase. Warranty for emergency batteries is 2 years.

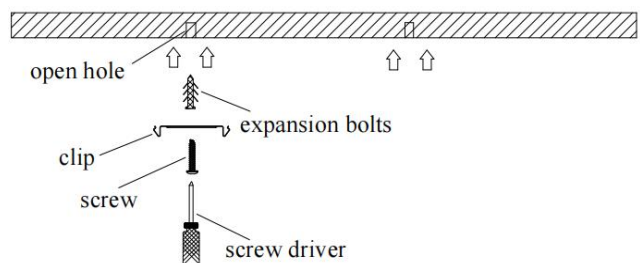
Important Notes

- * Operating and luminaire must be within rated temperature avoiding extreme humidity
- * Operation must be within rated input voltage.
- * Keep away from strong electromagnetic radiation sources and protect from lightning strike.
- * Should the unit malfunction, return to distributor or reseller. No user serviceable parts inside. Do not disassemble or attempt to repair the luminaire outside of the installation guidelines.
- * Do not install or use the luminaire if the housing/diffuser is found to be broken.
- * Do not apply direct pressure to the diffuser.
- * The Luminaire must be installed by a qualified electrician.
- * The Luminaire should be positioned away from heat, vibration and liquid. Avoid contact with any corrosive chemicals.
- * The Luminaire should be mounted in free air it is recommended not to exceed 30°C ambient.
- * Never cover the luminaire with heat insulation materials.
- * The luminaire should be positioned at least 1 metre away from radios, failure to do so may affect radio reception.
- * FOR EMERGENCY MODELS - After the emergency lamp has been fully charged for a period of time, the battery the unit should be replaced when the rated emergency discharge time is not reached.
- * For indoor or outdoor use.

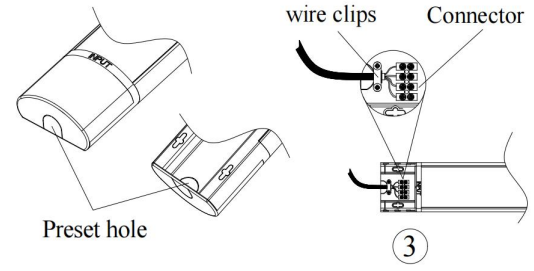
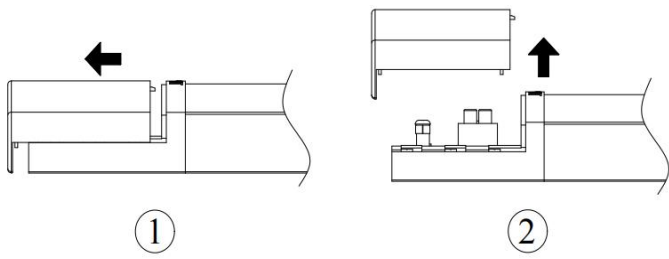
A. Make a right position for screw hole



B. Fix the thread locker to the ceiling

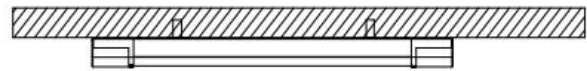
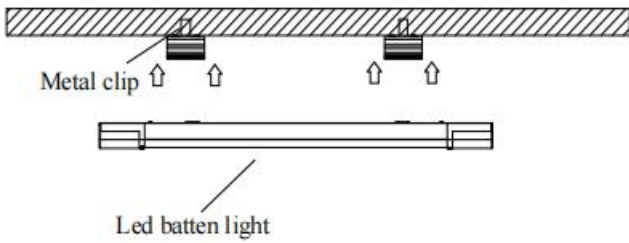



C. Open the end with input mask according picture 1 & picture 2, then open corresponding preset line hole according to the input cord location, pictures 3, and fix the cord clip.



D. Follow the reverse operation of picture 1 and picture 2 of step C, assemble the end cover and fix lamp on ceiling.

E. Adjust the position of the fixture



 **WASTE ELECTRICAL PRODUCTS SHOULD NOT BE DISPOSED OF WITH HOUSEHOLD WASTE. PLEASE RECYCLE WHERE FACILITIES EXIST. CHECK WITH YOUR LOCAL AUTHORITY FOR RECYCLING ADVICE.**

Warranty/Technical and contact information are all available at www.integral-led.com
 Integral LED is a division of Integral Memory plc,
 Unit 6 Iron Bridge Closed, Iron Bridge Business Park,
 London, NW 10 0UF, UK
 Integral EU BV, 2801 DG, NL